

## COMMON ISSUES about COMMON MEASURES

- Virginia Workforce Connection (VaWC or “VOS”) is the **system of record** for WIA performance and reporting.
  - Quarterly and Annual performance and reporting is extracted solely from VaWC data.
- The Nine Common Measures became effective for Virginia on July 1, 2010.
- Designations of “Older” and “Younger” Youth are eliminated.
  - In-school & out-of-school are still considered at point of participation.
- Case Notes are **not** included in the performance and reporting processes.
  - Case Notes are important for manual case tracking. They may be reviewed as part of auditing, monitoring, data validation and other manual review processes but are **not** counted by VaWC for performance or any other purpose.
- Always refer to [TEGL 17-05](#) and TEGL17-05 Change 2 for detailed information about the Common Measures.
- See [Common Measures Quick References](#) for detailed definitions and ETA/WIA references.

## Youth Measure: Attainment of a Degree or Certificate

**YOUTH WHO ATTAIN A DIPLOMA, GED, OR CERTIFICATE BY  
THE END OF THE THIRD QUARTER AFTER THE EXIT QUARTER**



**THE NUMBER OF YOUTH WHO EXIT DURING THE QUARTER**

### Youth participants considered in this Measure:

Those enrolled in education at the date of participation or at any point during the program.

### How the Measure is calculated:

#### **DIVIDE**

The number of youth participants who attain a diploma, GED or certificate by the end of the third quarter after the exit quarter

#### **BY**

The number of youth participants who exit during the quarter.

### Includes:

✓ Participants in secondary school at exit.

### Excludes:

X Work readiness certificate if **only** certificate earned.

### Other Factors:

- “Education” = participation in secondary school, post-secondary school, adult education programs or any other organized program of study leading to a degree or certificate.
- “Diploma” = any credential the Virginia Dept. of Education accepts as equivalent to a high school diploma, and post-secondary degrees such as Associate and Bachelor degrees.
- Diplomas, GEDs or certificates can be obtained while still receiving services or at any point by the end of the third quarter after the exit quarter.

## Youth Measure: Placement in Employment or Education

**THE NUMBER OF YOUTH IN EMPLOYMENT, INCLUDING THE MILITARY,  
OR ENROLLED IN POST-SECONDARY EDUCATION AND/OR ADVANCED  
TRAINING/OCCUPATIONAL SKILLS TRAINING IN THE FIRST QUARTER AFTER  
THE EXIT QUARTER**



**THE NUMBER OF YOUTH WHO EXIT DURING THE QUARTER**

### Youth participants considered in this Measure:

Those not in post-secondary education or employment, including the military, at the date of participation.

### How the Measure is calculated:

#### **DIVIDE**

The number of youth participants in employment, including the military, or enrolled in post-secondary education and/or advanced training/occupational skills training in the first quarter after the exit quarter

#### **BY**

The number of youth participants who exit during the quarter.

### Includes:

✓ Participants in secondary school at exit.

### Excludes:

X Participants in post-secondary education or employment at date of participation.

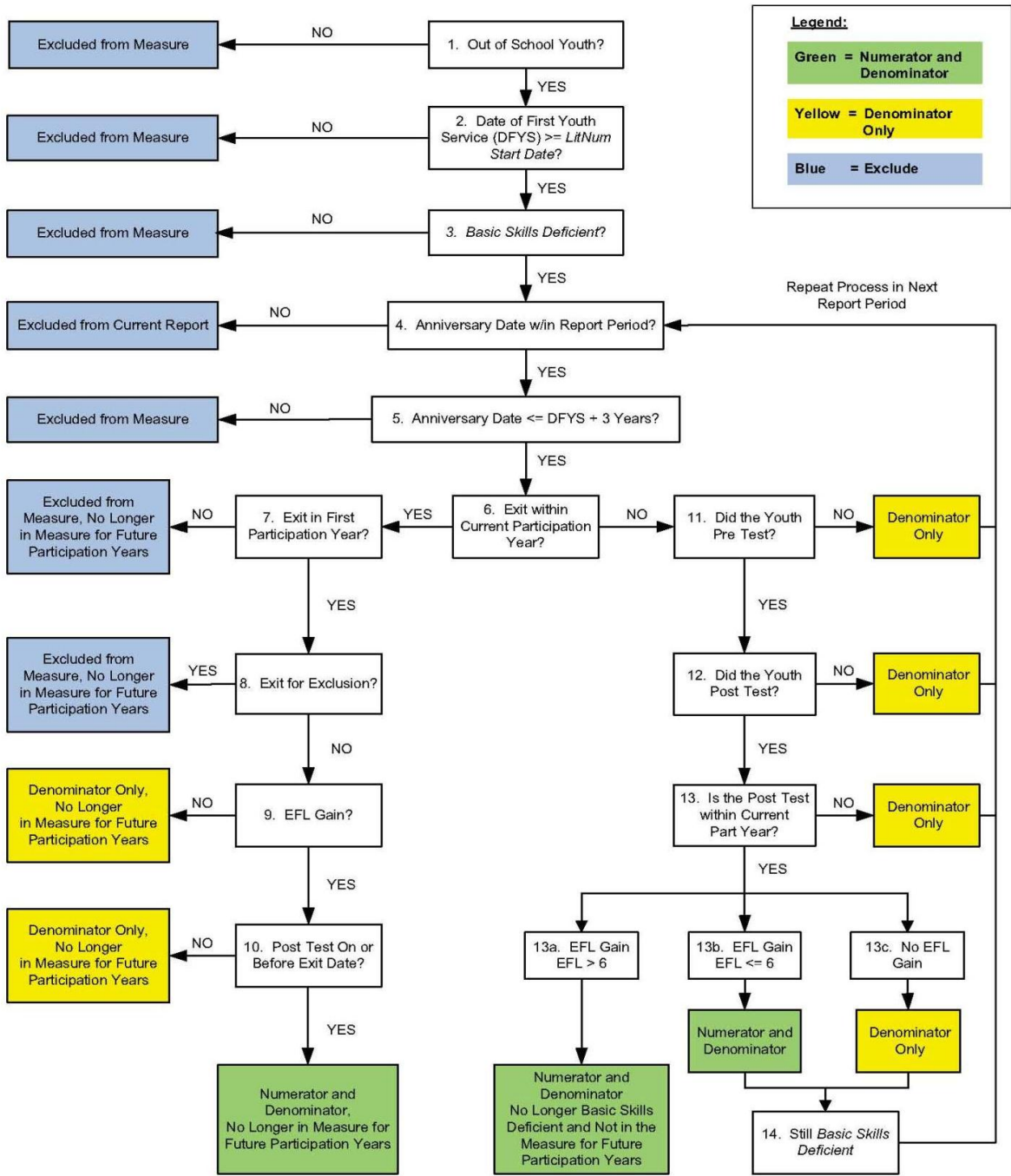
### Other Factors:

- Employment and education status at the date of participation are based on information collected from the participant.

# Youth Measure: Literacy & Numeracy Gain

The Decision Path below is useful in understanding how to apply the Literacy & Numeracy Measure.

## Literacy/Numeracy Decision Path (Third and Subsequent Years After State Implements the Measure)



## Adult Measure: Entered Employment Rate

THE NUMBER OF ADULTS EMPLOYED IN THE FIRST QUARTER  
AFTER THE EXIT QUARTER

$$\frac{\bullet}{\bullet}$$

THE NUMBER OF ADULTS WHO EXIT DURING THE QUARTER.

### **Adult participants considered in this Measure:**

Those not employed at date of participation.

### **How the Measure is calculated:**

#### **DIVIDE**

The number of adult participants employed in the first quarter after the exit quarter

#### **BY**

The number of adult participants who exit during the quarter.

### **Includes:**

- ✓ Participants who, although employed, have either received a notice of termination or the employer has issued a WARN or similar notice, or are transitioning military service members.

### **Excludes:**

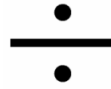
- X Those employed at the date of participation.

### **Other Factors:**

- Employment at the date of participation is based on information collected from the participant, not from wage records.

## Adult Measure: Employment Retention Rate at Six Months

THE NUMBER OF ADULTS EMPLOYED IN BOTH THE SECOND AND THE THIRD  
QUARTERS AFTER EXIT QUARTER



THE NUMBER OF ADULTS WHO EXIT DURING THE QUARTER.

### **Adult participants considered in this Measure:**

Those employed in the first quarter after the exit quarter.

### **How the Measure is calculated:**

#### **DIVIDE**

The number of adult participants employed in both the second and the third quarters after exit  
quarter

#### **BY**

The number of adult participants who exit during the quarter.

### **Includes:**

- ✓ Those employed in the first quarter after the exit quarter regardless of their employment status at participation.

### **Excludes:**

- X Those not employed in the first quarter after the exit quarter.

### **Other Factors:**

- Employment in the first, second and third quarters after the exit quarter need not be with the same employer.

## Adult Measure: Average Earnings

TOTAL EARNINGS IN THE SECOND QUARTER

+

TOTAL EARNINGS IN THIRD QUARTER AFTER THE EXIT QUARTER

÷

NUMBER OF ADULTS WHO EXIT DURING THE QUARTER.

### Adult participants considered in this Measure:

Those employed in the first, second and third quarters after the exit quarter.

### How the Measure is calculated:

#### **DIVIDE**

The total earnings in the second quarter plus total earnings in third quarter after the exit quarter  
**BY**

The number of adult participants who exit during the quarter.

### Excludes:

X Those whose employment in either the first, second or third quarter after the exit quarter was determined from supplemental sources, not from wage records.

### Other Factors:

- Wage records are the only data source for this measure.

## Dislocated Worker Measure: Entered Employment Rate

THE NUMBER OF DISLOCATED WORKERS WHO ENTERED EMPLOYMENT  
BY THE END OF THE FIRST QUARTER AFTER EXIT QUARTER



THE NUMBER OF DISLOCATED WORKERS WHO EXIT DURING THE QUARTER.

### Dislocated Worker participants considered in this Measure:

Those not employed at the date of participation.

### How the Measure is calculated:

#### **DIVIDE**

The number of dislocated worker participants who entered employment by the end of the first quarter after exit quarter

#### **BY**

The number of dislocated worker participants who exit during the quarter.

### Includes:

- ✓ Those who although employed, have either received a notice of termination or the employer has issued a WARN or similar notice, or are transitioning military service members.

### Excludes:

- X Participants employed at the date of participation.

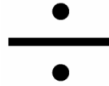
### Other Factors:

- Employment at the date of participation is based on information collected from the participant, not from wage records.



## Dislocated Worker Measure: Employment Retention Rate at Six Months

THE NUMBER OF DISLOCATED WORKERS EMPLOYED IN BOTH THE  
SECOND AND THIRD QUARTER AFTER THE EXIT QUARTER



THE NUMBER OF DISLOCATED WORKERS WHO EXIT DURING THE QUARTER.

### Dislocated Worker participants considered in this Measure:

Those employed in the first quarter after the exit quarter.

### How the Measure is calculated:

#### DIVIDE

The number of dislocated worker participants employed in both the second and third quarter  
after the exit quarter

#### BY

The number of dislocated worker participants who exit during the quarter.

### Includes:

- ✓ Those employed in the first quarter after the exit quarter regardless of employment status at participation.

### Excludes:

- X Participants not employed in the first quarter after the exit quarter.

### Other Factors:

- Employment in the first, second and third quarters after the exit quarter need not be with the same employer.

## Dislocated Worker Measure: Average Earnings

TOTAL EARNINGS IN THE SECOND QUARTER PLUS TOTAL EARNINGS IN THE THIRD  
QUARTER AFTER THE EXIT QUARTER

•  
—  
•

THE NUMBER OF DISLOCATED WORKER PARTICIPANTS  
WHO EXIT DURING THE QUARTER.

### Dislocated Worker participants considered in this measure:

Those employed in the first, second and third quarters after the exit quarter.

### How the Measure is calculated:

#### DIVIDE

Total earnings in the second quarter plus total earnings in the third quarter after the exit quarter  
**BY**

The number of dislocated worker participants who exit during the quarter.

### Excludes:

X Participants whose employment in the first, second or third quarter after the exit quarter was determined from supplemental sources and not from wage records.

### Other Factors:

- Wage records are the only data source for this measure.